



# COMBAT MANAGEMENT SYSTEM

C-FLEX COMBAT



**TERMA<sup>®</sup>**  
ALLIES IN INNOVATION



# Unparalleled Situational Awareness

With more than 25 years of C2 experience, Terma provides the mission proven C-Flex Command & Control system to Navies and Coast Guards around the world for unparalleled operational capabilities and Situational Awareness.

The increasing level of illegal activities from smugglers, trafficking, pirates and fishermen put great stress on operators securing the Maritime Domain of own territorial waters and the Exclusive Economic Zone (EEZ).

Present solutions for countering these activities are often costly, comprised of custom developed systems that rely on proprietary equipment and require substantial training.

As a member of Terma's C-Series family, C-Flex was designed and developed to satisfy growing customer needs and provide out of the box capabilities for unparalleled Situational Awareness and seamless interface to sensors, effectors and data link to other naval vessels and systems. C-Flex provides Patrol and Amphibious Vessels with surveillance, communication and enforcement capabilities – supporting tasks such as law enforcement, interception, anti-piracy and Search and Rescue as well as supporting naval operations including Anti-Air Warfare and Anti-Surface Warfare.

C-Flex provides full integration of onboard systems to support decision makers to better plan, coordinate, command and solve missions with increased effectiveness.

## Operational Capabilities

### Integrated Mission System

C-Flex provides a common intuitive user interface with full Situational Awareness (SA) to improve and secure fast decision-making by Commanders. C-Flex is a modular and scalable C2 system and fully integrated out of the box, with all C-Series products: C-Search (SCANTER), C-Fire, C-Link, and C-Guard (SKWS), and with easy integration of third party equipment. C-Flex integrates all types of sensors, self-protection, weapon and communication systems into one easy-to-operate system.

### Efficient Decision Making

Sensor and link data are collected, cleaned, automatically analyzed, correlated and presented as tracks with appropriate alert and advice for efficient decision-making and use of weapon systems.

### Search and Rescue

C-Flex has integrated search support tools for operators to conduct efficient search-and-rescue (SAR) operations. These tools are an integral part of the Command & Control (C2) system providing a number of standard search patterns as expanding square, parallel track, sector survey, etc. and with individual settings of search width, search speed, etc. depending on weather conditions.

### Automatic Evidence Collection

C-Flex provides automatic evidence collection, performing synchronized and time stamped recording and playback of track data, multiple TV/IR camera video, text, notes and voice communication. This is powerful legal evidence in support of court actions or useful for immediate evaluations, debriefings or investigations.



### Synchronizing Joint Operations

C-Series solutions include C-Link (i.e. a Tactical Data Link) to provide interface to air, land and naval systems which boosts mission effectiveness and increases surveillance capabilities over the horizon.

## Product Characteristics

### Mission Proven

The legacy of C-Flex is based on decades of missions on a vast number of vessels, ranging from Patrol Vessels (PV), Offshore Patrol Vessels (OPV) and Amphibious Vessels to Frigates and Command Ships. C-Flex has continuously been used in the Gulf of Aden for coordinating and executing operations against piracy to secure the merchant traffic and in the Arctic for EEZ law enforcement and control of the Maritime Domain of territorial water.

### Ease of Operation

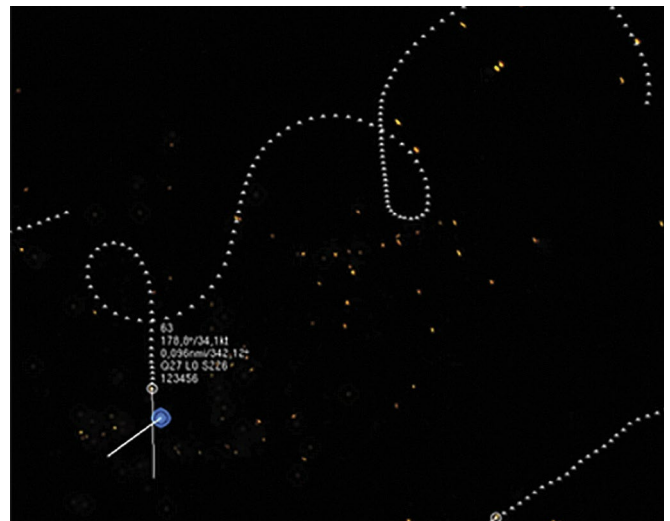
C-Flex's user-friendly interface is based on Terma's vast Human Factor expertise and equipped with automated decision support and monitoring functions – reducing the load on the operator and minimizing the likelihood of mistakes.

### Ease of Implementation

- Short delivery lead time (less than 12 months for standard systems)
- Rapid all in a box installation, test and commissioning (typically 3 to 6 months for standard systems)
- 10 days training for operators
- No ITAR items

## Key Benefits

- Instant Situational Awareness and information shared with other vessels or RHIBs
- Modular and scalable system with integration of all important sub-systems
- Integrated NATO and non-NATO data link to own assets or coalition forces
- Logging and replay for tracks, video, voice, etc. synchronized to support legal actions
- Standard search-and-rescue (SAR) and helicopter approach patterns included
- Low training overhead
- Cost efficient system with high capability and flexibility.





Operating in the aerospace, defense, and security sector, Terma supports customers and partners all over the world. With more than 1,600 committed employees globally, we develop and manufacture mission-critical products and solutions that meet rigorous customer requirements.

At Terma, we believe in the premise that creating customer value is not just about strong engineering and manufacturing skills. It is also about being able to apply these skills in the context of our customers' specific needs. Only through close collaboration and dialog can we deliver a level of partnership and integration unmatched in the industry.

Our business activities, products, and systems include: command and control systems; radar systems; self-protection systems for ships and aircraft; space technology; and advanced aerostructures for the aircraft industry.

Terma has decades of hands-on know-how in supporting and maintaining mission-critical systems in some of the world's most hostile areas. Terma Support & Services offers through-life support of all our products to maximize operational availability, enhance platform lifetime, and ensure the best possible cost of ownership.

Headquartered in Aarhus, Denmark, Terma has subsidiaries and operations across Europe, in the Middle East, in Asia Pacific as well as a wholly-owned U.S. subsidiary, Terma Inc., with offices in Washington D.C., Georgia and Texas.

© Terma A/S - 11/2023 Photo credits: Royal Danish Navy



[www.terma.com](http://www.terma.com)

**TERMA**<sup>T</sup>  
ALLIES IN INNOVATION